

IN THE DISTRICT COURT OF THE FIFTH JUDICIAL DISTRICT OF THE
STATE OF IDAHO, IN AND FOR THE COUNTY OF TWIN FALLS

In Re CSRBA) PARTIAL DECREE PURSUANT TO I.R.C.P. 54(b)
Case No. 49576) FOR FEDERAL RESERVED
)
) WATER RIGHT NO. 91-07937A

NAME AND ADDRESS: UNITED STATES OF AMERICA ACTING THROUGH
USDA FOREST SERVICE
550 W FORT ST MSC 033
BOISE ID 83724

SOURCE: See Attachment 1, Column A TRIBUTARY: See Attachment 1, Column B

Sources are located on National Forest System Land in the Upper North Fork St Joe River subwatershed (HUC12 170103040202).

QUANTITY: The amount of water necessary to control and suppress forest fires.

PRIORITY DATE: 11/06/1906

POINT OF DIVERSION: See Attachment 1, Columns C through G

PURPOSE AND PERIOD OF USE:

| | |
|---------------------------------|----------------------|
| <u>PURPOSE OF USE</u> | <u>PERIOD OF USE</u> |
| Administrative-Fire Suppression | 01/01 - 12/31 |

PLACE OF USE: National Forests in Idaho and the Kaniksu, Lolo and Kootenai National Forests in Montana.

See Attachment 2.

OTHER PROVISIONS NECESSARY FOR DEFINITION OR ADMINISTRATION OF THIS WATER RIGHT:

This right is limited to the intermittent diversion and use of water for the purpose of suppressing wildfires. This water right shall not be used as a basis to prevent the future appropriation of water.

This partial decree is subject to such general provisions necessary for the definition of the rights or for the efficient administration of the water rights as may be ultimately determined by the Court at a point in time no later than the entry of a final unified decree. Idaho Code § 42-1412(6).

RULE 54(b) CERTIFICATE

With respect to the issues determined by the above partial judgment it is hereby CERTIFIED, in accordance with Rule 54(b), I.R.C.P., that the court has determined that there is no just reason for delay of the entry of a final judgment and that the court has and does hereby direct that the above partial judgment is a final judgment upon which execution may issue and an appeal may be taken as provided by the Idaho Appellate Rules.

Eric J. Wildman
Presiding Judge of the
Coeur d'Alene-Spokane River Adjudication

Attachment 1

| | A | B | C | D | E | F | G |
|-----|-------------------------|-------------------------|----------|-------|---------|------|------------------------|
| 001 | SOURCE NAME | TO TRIBUTARY | TOWNSHIP | RANGE | SECTION | QQ | SURVEY CODE AND NUMBER |
| 002 | Mozier Creek | North Fork St Joe River | 46N | 05E | 02 | | |
| 003 | Unnamed Stream | Mozier Creek | 46N | 05E | 02 | | |
| 004 | Unnamed Stream | Ramsey Creek | 46N | 05E | 02 | | |
| 005 | Unnamed Stream | Ramsey Creek | 46N | 05E | 02 | | |
| 006 | Unnamed Stream | Ramsey Creek | 46N | 05E | 02 | | |
| 007 | Glen Creek | Ramsey Creek | 46N | 05E | 04 | | |
| 008 | Ramsey Creek | North Fork St Joe River | 46N | 05E | 04 | | |
| 009 | Unnamed Stream | Glen Creek | 46N | 05E | 04 | | |
| 010 | Unnamed Stream | Railroad Creek | 46N | 05E | 04 | | |
| 011 | Unnamed Stream | North Fork St Joe River | 46N | 06E | 05 | | |
| 012 | Unnamed Stream | North Fork St Joe River | 46N | 06E | 06 | NENE | L 1 |
| 013 | Mozier Creek | North Fork St Joe River | 46N | 06E | 06 | NENW | L 3 |
| 014 | North Fork St Joe River | St Joe River | 46N | 06E | 06 | NENW | L 3 |
| 015 | North Fork St Joe River | St Joe River | 46N | 06E | 06 | NESE | |
| 016 | North Fork St Joe River | St Joe River | 46N | 06E | 06 | NWNE | L 2 |
| 017 | Mozier Creek | North Fork St Joe River | 46N | 06E | 06 | NWNW | L 4 |
| 018 | Unnamed Stream | Mozier Creek | 46N | 06E | 06 | NWNW | L 4 |
| 019 | Unnamed Stream | Mozier Creek | 46N | 06E | 06 | NWSW | L 6 |
| 020 | Unnamed Stream | Mozier Creek | 46N | 06E | 06 | NWSW | L 6 |
| 021 | North Fork St Joe River | St Joe River | 46N | 06E | 06 | SENE | |
| 022 | Unnamed Stream | North Fork St Joe River | 46N | 06E | 06 | SENE | |
| 023 | North Fork St Joe River | St Joe River | 46N | 06E | 06 | SESE | |
| 024 | North Fork St Joe River | St Joe River | 46N | 06E | 06 | SWNE | |
| 025 | Unnamed Stream | North Fork St Joe River | 46N | 06E | 06 | SWNE | |
| 026 | Unnamed Stream | Mozier Creek | 46N | 06E | 06 | SWNW | L 5 |
| 027 | Unnamed Stream | Mozier Creek | 46N | 06E | 06 | SWNW | L 5 |
| 028 | Unnamed Stream | Mozier Creek | 46N | 06E | 06 | SWNW | L 5 |
| 029 | Unnamed Stream | North Fork St Joe River | 47N | 05E | 09 | | |
| 030 | Champion Creek | North Fork St Joe River | 47N | 05E | 13 | | |
| 031 | Unnamed Stream | Champion Creek | 47N | 05E | 13 | | |
| 032 | Park Creek | Champion Creek | 47N | 05E | 14 | | |
| 033 | Unnamed Stream | Champion Creek | 47N | 05E | 14 | | |
| 034 | Unnamed Stream | Park Creek | 47N | 05E | 14 | | |

Attachment 1

| | A | B | C | D | E | F | G |
|-----|-------------------------|-------------------------|-----|-----|----|---|---|
| 035 | Unnamed Stream | Park Creek | 47N | 05E | 14 | | |
| 036 | Unnamed Stream | Park Creek | 47N | 05E | 14 | | |
| 037 | Unnamed Stream | Park Creek | 47N | 05E | 14 | | |
| 038 | Park Creek | Champion Creek | 47N | 05E | 15 | | |
| 039 | Rougin Creek | North Fork St Joe River | 47N | 05E | 15 | | |
| 040 | Unnamed Stream | Park Creek | 47N | 05E | 15 | | |
| 041 | Unnamed Stream | Park Creek | 47N | 05E | 15 | | |
| 042 | Unnamed Stream | Park Creek | 47N | 05E | 15 | | |
| 043 | Unnamed Stream | Park Creek | 47N | 05E | 15 | | |
| 044 | Unnamed Stream | Park Creek | 47N | 05E | 15 | | |
| 045 | Unnamed Stream | Park Creek | 47N | 05E | 15 | | |
| 046 | Unnamed Stream | Rougin Creek | 47N | 05E | 15 | | |
| 047 | Unnamed Stream | Rougin Creek | 47N | 05E | 15 | | |
| 048 | Unnamed Stream | Rougin Creek | 47N | 05E | 15 | | |
| 049 | North Fork St Joe River | St Joe River | 47N | 05E | 17 | | |
| 050 | North Fork St Joe River | St Joe River | 47N | 05E | 19 | | |
| 051 | Unnamed Stream | Moon Creek | 47N | 05E | 19 | | |
| 052 | Unnamed Stream | Moon Creek | 47N | 05E | 19 | | |
| 053 | Unnamed Stream | Moon Creek | 47N | 05E | 19 | | |
| 054 | Moon Creek | North Fork St Joe River | 47N | 05E | 20 | | |
| 055 | North Fork St Joe River | St Joe River | 47N | 05E | 20 | | |
| 056 | Unnamed Stream | Moon Creek | 47N | 05E | 20 | | |
| 057 | Unnamed Stream | Moon Creek | 47N | 05E | 20 | | |
| 058 | Unnamed Stream | Moon Creek | 47N | 05E | 20 | | |
| 059 | Unnamed Stream | Moon Creek | 47N | 05E | 20 | | |
| 060 | Unnamed Stream | North Fork St Joe River | 47N | 05E | 20 | | |
| 061 | Unnamed Stream | North Fork St Joe River | 47N | 05E | 20 | | |
| 062 | North Fork St Joe River | St Joe River | 47N | 05E | 21 | | |
| 063 | Rougin Creek | North Fork St Joe River | 47N | 05E | 21 | | |
| 064 | Unnamed Stream | North Fork St Joe River | 47N | 05E | 21 | | |
| 065 | Unnamed Stream | North Fork St Joe River | 47N | 05E | 21 | | |
| 066 | Unnamed Stream | North Fork St Joe River | 47N | 05E | 21 | | |
| 067 | Unnamed Stream | Rougin Creek | 47N | 05E | 21 | | |
| 068 | Unnamed Stream | Rougin Creek | 47N | 05E | 21 | | |

Attachment 1

| | A | B | C | D | E | F | G |
|-----|-------------------------|-------------------------|-----|-----|----|---|---|
| 069 | Park Creek | Champion Creek | 47N | 05E | 22 | | |
| 070 | Unnamed Stream | North Fork St Joe River | 47N | 05E | 22 | | |
| 071 | Unnamed Stream | North Fork St Joe River | 47N | 05E | 22 | | |
| 072 | Unnamed Stream | Park Creek | 47N | 05E | 22 | | |
| 073 | Unnamed Stream | Park Creek | 47N | 05E | 22 | | |
| 074 | Unnamed Stream | Park Creek | 47N | 05E | 22 | | |
| 075 | Unnamed Stream | Park Creek | 47N | 05E | 22 | | |
| 076 | Unnamed Stream | Park Creek | 47N | 05E | 22 | | |
| 077 | Champion Creek | North Fork St Joe River | 47N | 05E | 23 | | |
| 078 | Unnamed Stream | Champion Creek | 47N | 05E | 23 | | |
| 079 | Unnamed Stream | Park Creek | 47N | 05E | 23 | | |
| 080 | Champion Creek | North Fork St Joe River | 47N | 05E | 24 | | |
| 081 | Unnamed Stream | Bullion Creek | 47N | 05E | 24 | | |
| 082 | Unnamed Stream | Bullion Creek | 47N | 05E | 24 | | |
| 083 | Unnamed Stream | Champion Creek | 47N | 05E | 24 | | |
| 084 | Unnamed Stream | Champion Creek | 47N | 05E | 24 | | |
| 085 | Unnamed Stream | North Fork St Joe River | 47N | 05E | 24 | | |
| 086 | Unnamed Stream | Wonderful Creek | 47N | 05E | 24 | | |
| 087 | Bullion Creek | North Fork St Joe River | 47N | 05E | 25 | | |
| 088 | North Fork St Joe River | St Joe River | 47N | 05E | 25 | | |
| 089 | Unnamed Stream | Bullion Creek | 47N | 05E | 25 | | |
| 090 | Unnamed Stream | Bullion Creek | 47N | 05E | 25 | | |
| 091 | Unnamed Stream | Bullion Creek | 47N | 05E | 25 | | |
| 092 | Unnamed Stream | North Fork St Joe River | 47N | 05E | 25 | | |
| 093 | Unnamed Stream | North Fork St Joe River | 47N | 05E | 25 | | |
| 094 | Unnamed Stream | North Fork St Joe River | 47N | 05E | 25 | | |
| 095 | Champion Creek | North Fork St Joe River | 47N | 05E | 26 | | |
| 096 | North Fork St Joe River | St Joe River | 47N | 05E | 26 | | |
| 097 | Ramsey Creek | North Fork St Joe River | 47N | 05E | 26 | | |
| 098 | Unnamed Stream | North Fork St Joe River | 47N | 05E | 26 | | |
| 099 | Unnamed Stream | North Fork St Joe River | 47N | 05E | 26 | | |
| 100 | Unnamed Stream | North Fork St Joe River | 47N | 05E | 26 | | |
| 101 | Unnamed Stream | North Fork St Joe River | 47N | 05E | 26 | | |
| 102 | Unnamed Stream | North Fork St Joe River | 47N | 05E | 26 | | |

Attachment 1

| | A | B | C | D | E | F | G |
|-----|-------------------------|-------------------------|-----|-----|----|---|---|
| 103 | Unnamed Stream | North Fork St Joe River | 47N | 05E | 26 | | |
| 104 | Unnamed Stream | North Fork St Joe River | 47N | 05E | 26 | | |
| 105 | Unnamed Stream | North Fork St Joe River | 47N | 05E | 26 | | |
| 106 | Unnamed Stream | North Fork St Joe River | 47N | 05E | 26 | | |
| 107 | Champion Creek | North Fork St Joe River | 47N | 05E | 27 | | |
| 108 | North Fork St Joe River | St Joe River | 47N | 05E | 27 | | |
| 109 | Park Creek | Champion Creek | 47N | 05E | 27 | | |
| 110 | Unnamed Stream | North Fork St Joe River | 47N | 05E | 27 | | |
| 111 | Unnamed Stream | North Fork St Joe River | 47N | 05E | 27 | | |
| 112 | Unnamed Stream | North Fork St Joe River | 47N | 05E | 27 | | |
| 113 | Unnamed Stream | North Fork St Joe River | 47N | 05E | 27 | | |
| 114 | Unnamed Stream | North Fork St Joe River | 47N | 05E | 27 | | |
| 115 | Unnamed Stream | North Fork St Joe River | 47N | 05E | 27 | | |
| 116 | Unnamed Stream | North Fork St Joe River | 47N | 05E | 27 | | |
| 117 | Unnamed Stream | North Fork St Joe River | 47N | 05E | 27 | | |
| 118 | Unnamed Stream | North Fork St Joe River | 47N | 05E | 27 | | |
| 119 | Unnamed Stream | North Fork St Joe River | 47N | 05E | 27 | | |
| 120 | Unnamed Stream | North Fork St Joe River | 47N | 05E | 27 | | |
| 121 | Callahan Creek | North Fork St Joe River | 47N | 05E | 28 | | |
| 122 | Moon Creek | North Fork St Joe River | 47N | 05E | 28 | | |
| 123 | North Fork St Joe River | St Joe River | 47N | 05E | 28 | | |
| 124 | Railroad Creek | North Fork St Joe River | 47N | 05E | 28 | | |
| 125 | Unnamed Stream | North Fork St Joe River | 47N | 05E | 28 | | |
| 126 | Unnamed Stream | North Fork St Joe River | 47N | 05E | 28 | | |
| 127 | Unnamed Stream | North Fork St Joe River | 47N | 05E | 28 | | |
| 128 | Unnamed Stream | Railroad Creek | 47N | 05E | 28 | | |
| 129 | Callahan Creek | North Fork St Joe River | 47N | 05E | 29 | | |
| 130 | Moon Creek | North Fork St Joe River | 47N | 05E | 29 | | |
| 131 | Unnamed Stream | Callahan Creek | 47N | 05E | 29 | | |
| 132 | Unnamed Stream | Callahan Creek | 47N | 05E | 29 | | |
| 133 | Unnamed Stream | Callahan Creek | 47N | 05E | 29 | | |
| 134 | Unnamed Stream | Callahan Creek | 47N | 05E | 29 | | |
| 135 | Unnamed Stream | Moon Creek | 47N | 05E | 29 | | |
| 136 | Unnamed Stream | Moon Creek | 47N | 05E | 29 | | |

Attachment 1

| | A | B | C | D | E | F | G |
|-----|-------------------------|-------------------------|-----|-----|----|---|---|
| 137 | Unnamed Stream | Railroad Creek | 47N | 05E | 29 | | |
| 138 | Unnamed Stream | Callahan Creek | 47N | 05E | 30 | | |
| 139 | Railroad Creek | North Fork St Joe River | 47N | 05E | 32 | | |
| 140 | Unnamed Stream | Callahan Creek | 47N | 05E | 32 | | |
| 141 | Unnamed Stream | Railroad Creek | 47N | 05E | 32 | | |
| 142 | Unnamed Stream | Railroad Creek | 47N | 05E | 32 | | |
| 143 | Unnamed Stream | Railroad Creek | 47N | 05E | 32 | | |
| 144 | Unnamed Stream | Railroad Creek | 47N | 05E | 32 | | |
| 145 | Unnamed Stream | Railroad Creek | 47N | 05E | 32 | | |
| 146 | Unnamed Stream | Railroad Creek | 47N | 05E | 32 | | |
| 147 | Railroad Creek | North Fork St Joe River | 47N | 05E | 33 | | |
| 148 | Unnamed Stream | North Fork St Joe River | 47N | 05E | 33 | | |
| 149 | Unnamed Stream | Railroad Creek | 47N | 05E | 33 | | |
| 150 | Unnamed Stream | Railroad Creek | 47N | 05E | 33 | | |
| 151 | Unnamed Stream | Railroad Creek | 47N | 05E | 33 | | |
| 152 | Unnamed Stream | Railroad Creek | 47N | 05E | 33 | | |
| 153 | Ramsey Creek | North Fork St Joe River | 47N | 05E | 34 | | |
| 154 | Unnamed Stream | North Fork St Joe River | 47N | 05E | 34 | | |
| 155 | Unnamed Stream | North Fork St Joe River | 47N | 05E | 34 | | |
| 156 | Unnamed Stream | North Fork St Joe River | 47N | 05E | 34 | | |
| 157 | Unnamed Stream | Ramsey Creek | 47N | 05E | 34 | | |
| 158 | Unnamed Stream | Ramsey Creek | 47N | 05E | 34 | | |
| 159 | North Fork St Joe River | St Joe River | 47N | 05E | 35 | | |
| 160 | Ramsey Creek | North Fork St Joe River | 47N | 05E | 35 | | |
| 161 | Unnamed Stream | North Fork St Joe River | 47N | 05E | 35 | | |
| 162 | Unnamed Stream | North Fork St Joe River | 47N | 05E | 35 | | |
| 163 | Unnamed Stream | North Fork St Joe River | 47N | 05E | 35 | | |
| 164 | Unnamed Stream | North Fork St Joe River | 47N | 05E | 35 | | |
| 165 | Unnamed Stream | North Fork St Joe River | 47N | 05E | 35 | | |
| 166 | Unnamed Stream | North Fork St Joe River | 47N | 05E | 35 | | |
| 167 | Unnamed Stream | Ramsey Creek | 47N | 05E | 35 | | |
| 168 | Unnamed Stream | Ramsey Creek | 47N | 05E | 35 | | |
| 169 | Unnamed Stream | Ramsey Creek | 47N | 05E | 35 | | |
| 170 | Unnamed Stream | Ramsey Creek | 47N | 05E | 35 | | |

Attachment 1

| | A | B | C | D | E | F | G |
|-----|-----------------|-----------------|-----|-----|----|------|-----|
| 171 | Unnamed Stream | Ramsey Creek | 47N | 05E | 35 | | |
| 172 | Unnamed Stream | Wonderful Creek | 47N | 06E | 17 | | |
| 173 | Unnamed Stream | Wonderful Creek | 47N | 06E | 17 | | |
| 174 | Unnamed Stream | Wonderful Creek | 47N | 06E | 17 | | |
| 175 | Unnamed Stream | Wonderful Creek | 47N | 06E | 17 | | |
| 176 | Unnamed Stream | Wonderful Creek | 47N | 06E | 17 | | |
| 177 | Unnamed Stream | Wonderful Creek | 47N | 06E | 18 | | |
| 178 | Unnamed Stream | Wonderful Creek | 47N | 06E | 18 | | |
| 179 | Unnamed Stream | Wonderful Creek | 47N | 06E | 18 | | |
| 180 | Unnamed Stream | Wonderful Creek | 47N | 06E | 18 | | |
| 181 | Unnamed Stream | Wonderful Creek | 47N | 06E | 18 | | |
| 182 | Unnamed Stream | Wonderful Creek | 47N | 06E | 18 | | |
| 183 | Wonderful Creek | Bullion Creek | 47N | 06E | 19 | NENE | |
| 184 | Unnamed Stream | Wonderful Creek | 47N | 06E | 19 | NENW | |
| 185 | Unnamed Stream | Wonderful Creek | 47N | 06E | 19 | NENW | |
| 186 | Unnamed Stream | Wonderful Creek | 47N | 06E | 19 | NENW | |
| 187 | Wonderful Creek | Bullion Creek | 47N | 06E | 19 | NENW | |
| 188 | Wonderful Creek | Bullion Creek | 47N | 06E | 19 | NWNE | |
| 189 | Unnamed Stream | Wonderful Creek | 47N | 06E | 19 | NWNW | L 1 |
| 190 | Unnamed Stream | Wonderful Creek | 47N | 06E | 19 | NWNW | L 1 |
| 191 | Wonderful Creek | Bullion Creek | 47N | 06E | 19 | SENE | |
| 192 | Unnamed Stream | Wonderful Creek | 47N | 06E | 19 | SENE | |
| 193 | Unnamed Stream | Wonderful Creek | 47N | 06E | 19 | SENE | |
| 194 | Wonderful Creek | Bullion Creek | 47N | 06E | 19 | SESE | |
| 195 | Unnamed Stream | Wonderful Creek | 47N | 06E | 19 | SWNE | |
| 196 | Wonderful Creek | Bullion Creek | 47N | 06E | 19 | SWNE | |
| 197 | Unnamed Stream | Bullion Creek | 47N | 06E | 19 | SWSW | L 4 |
| 198 | Unnamed Stream | Wonderful Creek | 47N | 06E | 20 | NESW | |
| 199 | Unnamed Stream | Wonderful Creek | 47N | 06E | 20 | NWNE | |
| 200 | Unnamed Stream | Wonderful Creek | 47N | 06E | 20 | NWNW | |
| 201 | Unnamed Stream | Wonderful Creek | 47N | 06E | 20 | NWSW | |
| 202 | Wonderful Creek | Bullion Creek | 47N | 06E | 20 | NWSW | |
| 203 | Unnamed Stream | Wonderful Creek | 47N | 06E | 20 | SENE | |
| 204 | Unnamed Stream | Wonderful Creek | 47N | 06E | 20 | SENE | |

Attachment 1




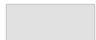

| | A | B | C | D | E | F | G |
|-----|-------------------------|-------------------------|-----|-----|----|------|-----|
| 205 | Unnamed Stream | Wonderful Creek | 47N | 06E | 20 | SENW | |
| 206 | Unnamed Stream | Wonderful Creek | 47N | 06E | 20 | SESW | |
| 207 | Unnamed Stream | Wonderful Creek | 47N | 06E | 20 | SWNE | |
| 208 | Unnamed Stream | Wonderful Creek | 47N | 06E | 20 | SWNW | |
| 209 | Wonderful Creek | Bullion Creek | 47N | 06E | 20 | SWNW | |
| 210 | Unnamed Stream | Wonderful Creek | 47N | 06E | 20 | SWSE | |
| 211 | Unnamed Stream | Wonderful Creek | 47N | 06E | 20 | SWSW | |
| 212 | Wonderful Creek | Bullion Creek | 47N | 06E | 20 | SWSW | |
| 213 | Bullion Creek | North Fork St Joe River | 47N | 06E | 21 | | |
| 214 | Unnamed Stream | Bullion Creek | 47N | 06E | 21 | | |
| 215 | Unnamed Stream | Bullion Creek | 47N | 06E | 21 | | |
| 216 | Unnamed Stream | Bullion Creek | 47N | 06E | 21 | | |
| 217 | Unnamed Stream | Bullion Creek | 47N | 06E | 21 | | |
| 218 | Unnamed Stream | Bullion Creek | 47N | 06E | 21 | | |
| 219 | Bullion Creek | North Fork St Joe River | 47N | 06E | 22 | | |
| 220 | Bullion Creek | North Fork St Joe River | 47N | 06E | 28 | | |
| 221 | Unnamed Stream | Bullion Creek | 47N | 06E | 28 | | |
| 222 | Unnamed Stream | North Fork St Joe River | 47N | 06E | 28 | | |
| 223 | Bullion Creek | North Fork St Joe River | 47N | 06E | 29 | | |
| 224 | Unnamed Stream | Bullion Creek | 47N | 06E | 29 | | |
| 225 | Bullion Creek | North Fork St Joe River | 47N | 06E | 30 | | |
| 226 | Unnamed Stream | Bullion Creek | 47N | 06E | 30 | | |
| 227 | Unnamed Stream | Bullion Creek | 47N | 06E | 30 | | |
| 228 | Unnamed Stream | Bullion Creek | 47N | 06E | 30 | | |
| 229 | Wonderful Creek | Bullion Creek | 47N | 06E | 30 | | |
| 230 | Bullion Creek | North Fork St Joe River | 47N | 06E | 31 | NENW | |
| 231 | Bullion Creek | North Fork St Joe River | 47N | 06E | 31 | NWNE | |
| 232 | Bullion Creek | North Fork St Joe River | 47N | 06E | 31 | NWNW | L 1 |
| 233 | Unnamed Stream | Bullion Creek | 47N | 06E | 31 | NWNW | L 1 |
| 234 | North Fork St Joe River | St Joe River | 47N | 06E | 31 | NWSW | L 3 |
| 235 | Unnamed Stream | North Fork St Joe River | 47N | 06E | 31 | NWSW | L 3 |
| 236 | Unnamed Stream | North Fork St Joe River | 47N | 06E | 31 | NWSW | L 3 |
| 237 | Mozier Creek | North Fork St Joe River | 47N | 06E | 31 | SESW | |
| 238 | North Fork St Joe River | St Joe River | 47N | 06E | 31 | SWSE | |

Attachment 1

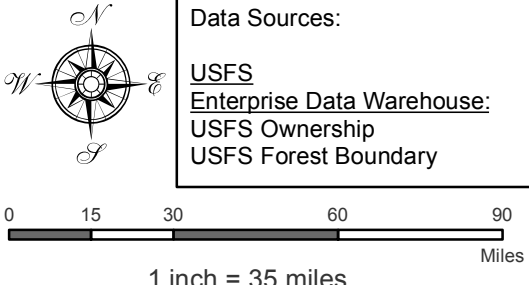
| | A | B | C | D | E | F | G |
|-----|-------------------------|-------------------------|-----|-----|----|------|-----|
| 239 | North Fork St Joe River | St Joe River | 47N | 06E | 31 | SWSW | L 4 |
| 240 | Unnamed Stream | North Fork St Joe River | 47N | 06E | 31 | SWSW | L 4 |
| 241 | Unnamed Stream | North Fork St Joe River | 47N | 06E | 32 | | |
| 242 | Unnamed Stream | North Fork St Joe River | 47N | 06E | 32 | | |
| 243 | Unnamed Stream | North Fork St Joe River | 47N | 06E | 33 | | |
| 244 | Unnamed Stream | North Fork St Joe River | 47N | 06E | 33 | | |
| 245 | Unnamed Stream | North Fork St Joe River | 47N | 06E | 33 | | |
| 246 | Unnamed Stream | North Fork St Joe River | 47N | 06E | 33 | | |
| 247 | Unnamed Pond | Mozier Creek | 46N | 06E | 06 | | |
| 248 | Unnamed Pond | North Fork St Joe River | 46N | 06E | 06 | | |
| 249 | Unnamed Pond | Moon Creek | 47N | 05E | 20 | | |
| 250 | Unnamed Pond | Moon Creek | 47N | 05E | 20 | | |
| 251 | Unnamed Pond | Moon Creek | 47N | 05E | 20 | | |
| 252 | Unnamed Pond | Moon Creek | 47N | 05E | 20 | | |
| 253 | Unnamed Pond | Moon Creek | 47N | 05E | 20 | | |
| 254 | Unnamed Pond | Moon Creek | 47N | 05E | 20 | | |
| 255 | Unnamed Pond | North Fork St Joe River | 47N | 05E | 26 | | |
| 256 | Unnamed Pond | North Fork St Joe River | 47N | 05E | 26 | | |
| 257 | Unnamed Pond | North Fork St Joe River | 47N | 05E | 26 | | |
| 258 | Unnamed Pond | North Fork St Joe River | 47N | 05E | 27 | | |
| 259 | Unnamed Pond | North Fork St Joe River | 47N | 05E | 27 | | |
| 260 | Unnamed Pond | North Fork St Joe River | 47N | 05E | 27 | | |
| 261 | Unnamed Pond | North Fork St Joe River | 47N | 05E | 27 | | |
| 262 | Unnamed Pond | North Fork St Joe River | 47N | 05E | 28 | | |
| 263 | Unnamed Pond | North Fork St Joe River | 47N | 05E | 28 | | |
| 264 | Unnamed Pond | Bullion Creek | 47N | 06E | 29 | | |
| 265 | Unnamed Pond | Bullion Creek | 47N | 06E | 30 | | |

Attachment 2
 Place of Use Map Fire Suppression - Water Right No. 91-07937A
 National Forests in Idaho and the Kaniksu, Lolo and Kootenai NF in Montana

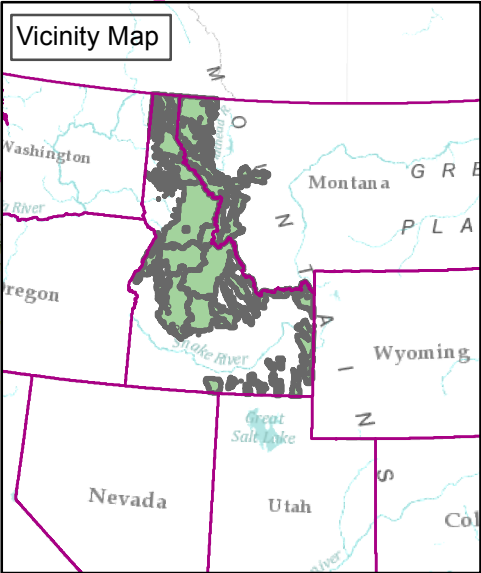
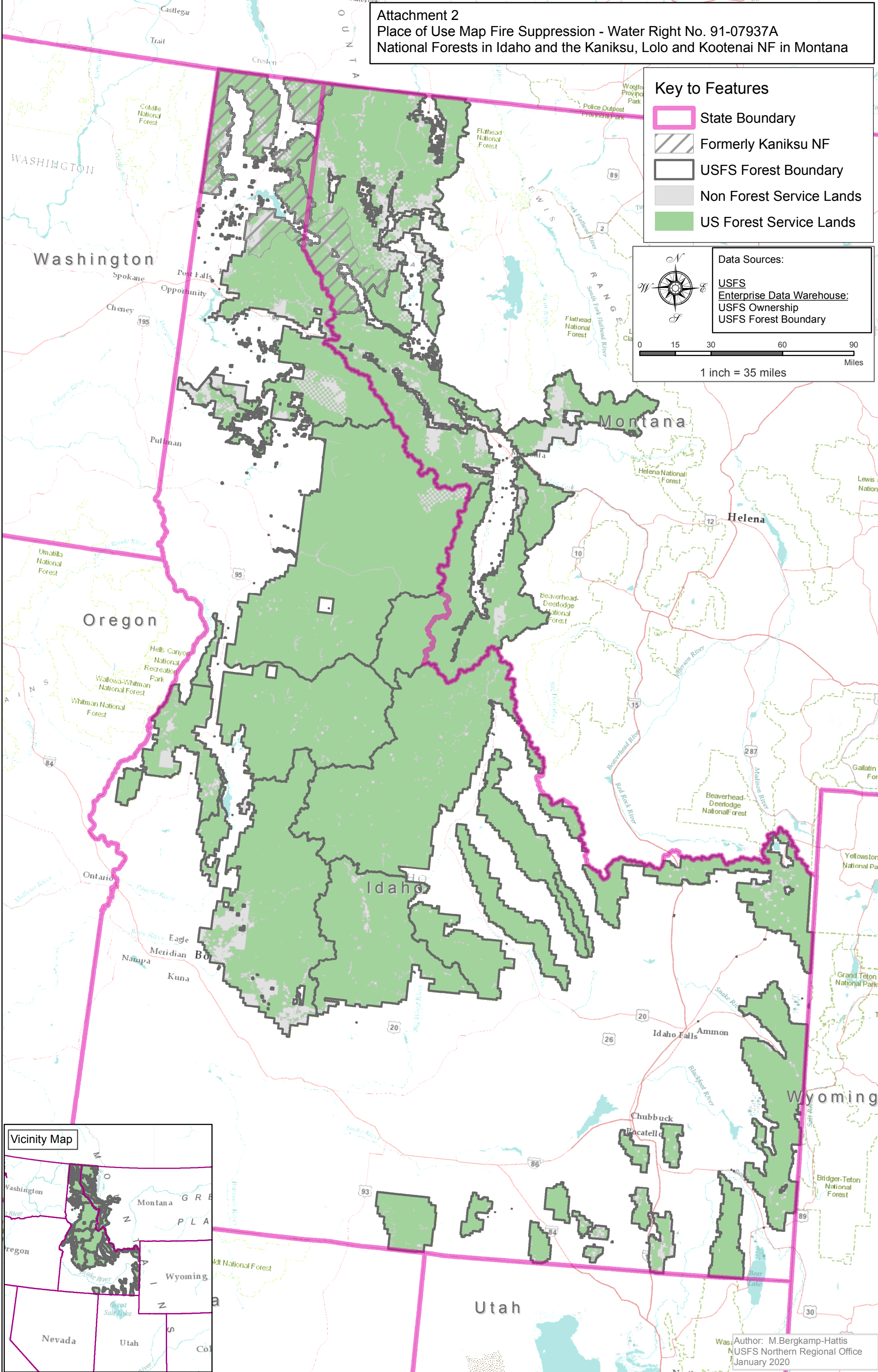
Key to Features

-  State Boundary
-  Formerly Kaniksu NF
-  USFS Forest Boundary
-  Non Forest Service Lands
-  US Forest Service Lands

Data Sources:
 USFS
 Enterprise Data Warehouse:
 USFS Ownership
 USFS Forest Boundary



0 15 30 60 90
 Miles
 1 inch = 35 miles



Author: M. Bergkamp-Hattis
 USFS Northern Regional Office
 January 2020